



Scapes Photography

By: Travis Lord

What is Scapes Photography

An image featuring an expansive view without any humans dominating the scene. Urban, Rural, Sea, Sky Scapes, and traditional Landscapes are all included in this category.

Common Equipment Used:

Usually Wide Angle Lenses:
Many Widths ranging from
12mm to 28mm.
Variety of zooms
Primes

Telephoto landscapes can
look good too!



Filters:
Graduated ND Filters
Neutral Density Filters (big
stopper etc)
Polarised Filter

Other:
Sturdy Tripod
Shutter Cable Release

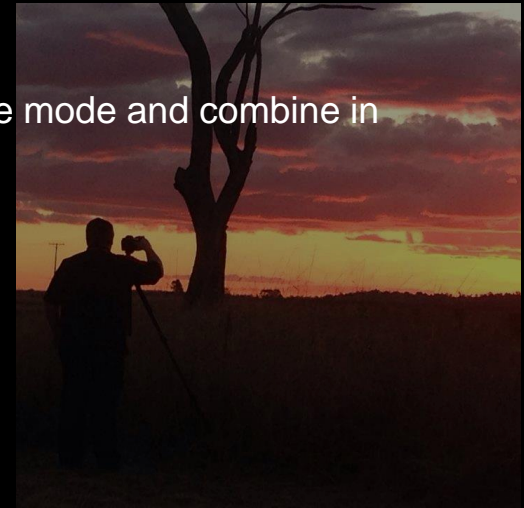


Camera Settings

What camera settings should you use?

These would be the most common settings used for landscape photography.

- Put your camera onto a good sturdy tripod, turn OFF image stabilisation.
- Set your zoom to its widest, eg 18mm.
- Set your aperture to f/11 or higher. Note: many lenses will lose sharpness (often referred to as diffraction), and introduce chromatic aberration the higher you go.
- Set your ISO to the lowest it will go, EG: 100.
- Adjust shutter speed to get the best exposure.
- For increased dynamic range, set your camera to multiple exposure mode and combine in post.



How to compose:

- Composition of landscape photography is fairly subjective.
- Avoid distractions, street signs, lamps, posts electricity lines where possible.
- Look for leading lines
- Look for shapes, curves, EG: an S shape in a creek, triangles in trees.
- Get down low, or up high, but avoid “eye height” where possible to increase interest.
- Pay attention to how the light is falling, avoid distracting shadows.
- Make sure your horizons are level, if they're not they need to look purposely done and needs to compliment the scene.



When is the best time?

Most of us would think of scapes as having been taken at golden hour. Scapes can be taken at a variety of times, each will give a different look to the same scene, if you have the time you should even try and capture the same scene at significantly different times.

There are many apps on your phone / tablet / ipads which can help you with this also. Check out apps called an ephemeris.



Scapes with a Difference

What does this mean?

Scapes don't have to be an expansive view of land at golden hour with streams of light, or a sunrise at the beach.

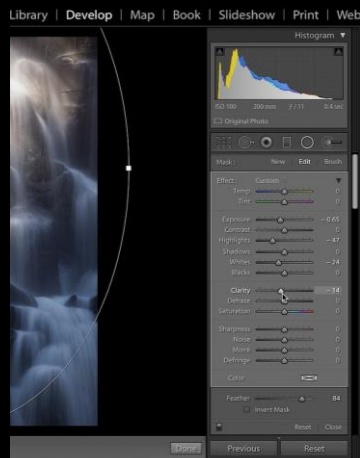
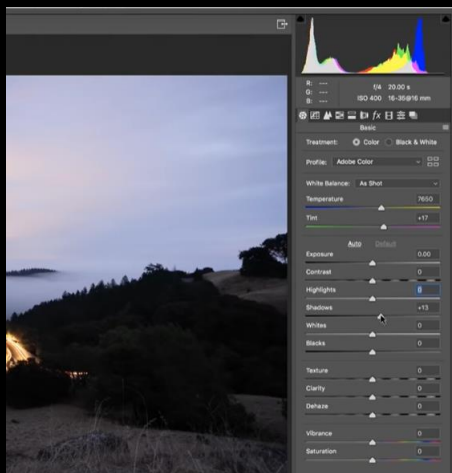
Some other ideas to consider:

- Moonlit seas, rivers or creeks
- City Scapes showing the buildings and lights
- Milky way over mountains
- Minimalistic views, a single tree on a hillside
- Movement – clouds, water, trees, people



Post Processing tips

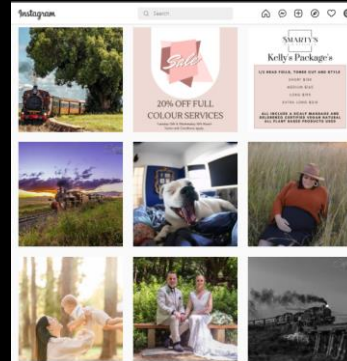
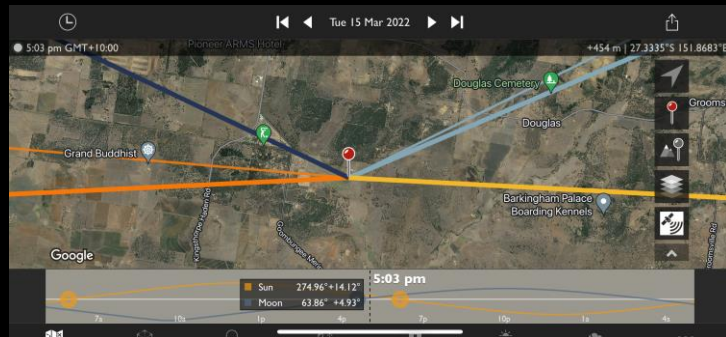
- Profile corrections
- Remove Chromatic Aberrations
- Crop the sky and foreground
- Adjust the white balance
- Use the histogram to avoid clipping highlights, shadows and colour channels
- Try some software based graduated and radial filters
- Play with increasing the texture, clarity and dehaze sliders
- Tonal Contrast in Nik Color Efex Pro really boosts the texture of clouds
- Check for dust bunnies



How to find a good location?

Finding a good location is probably the hardest part of landscape photography. These are a few ways that I find locations:

- Just drive, pick a direction you've never been before, drive down random dirt roads.
- Use google earth, look for bodies of water, rivers, lakes, streams from above and then go check it out.
- Instagram, search #Toowoomba or #Dalby and take a look at some of the images that come up.
- Facebook, join local community groups and ask for possible locations. Many will be happy to share.
- Ask other photographers
- As mentioned earlier use an APP on your phone called an ephemeris.



Inspiration

Where are some good places to find inspiration?

Photo sharing sites are a great resource to see other people's photography and draw inspiration.

- Facebook
- Instagram
- 500px.com
- Flickr.com
- Viewbug.com



Questions?

Ask any questions now, or you can email me at travis@lord.photography

How can I improve?

There are several ways you can find resources to improve your photography. At the Toowoomba Photographic Society we offer several ways to do this.

Post your image to our Facebook group and ask for feedback:

<https://www.facebook.com/groups/TPSClosedGroup>

Use critique corner on MyPhotoClub

<https://toowoomba.myphotoclub.com.au/critique-corner-home/>

Put your images into our monthly competitions

Ask one of our members to be your mentor